



CHÂTEAU

LA GRAVE BERTIN

ENTRE DEUX MERS

GRAND VIN DE BORDEAUX

terre de symbiose





CHÂTEAU

LA GRAVE BERTIN

FAMILLE FURT DEPUIS 1895

SUMMARY

- FAMILY WINERY P3
- LAND OF SYMBIOSIS P4
- OUR WINES P5
- THE AGENCE P6

FAMILY WINERY

A LONG STORY

Behind our name lies our pride, our story, our signature. Today, this signature is affixed by two brothers: Maxime and Sébastien. Together, we have a common dream: continue the work of our elders, and set the estate established in 1895 well in the 21st century.



NEW CHALLENGES

Having taken over the management of the winery in 2009, we have since worked to rejuvenate our wines and develop our activities. Our estate therefore represents our entire history to this day: a clever mix of tradition and uninhibited modernism, a symbol of hard work with today's challenges.



NEW GENERATION

Sixth generation of winegrowers in the FURT family, Sébastien and Maxime are the worthy heirs of a long line of passionate.

Working in symbiosis, they create wines of recognised quality with sustainable viticulture in accordance with their environmental principles.



Our estate is certified HAUTE VALEUR ENVIRONNEMENTALE level 4 since 2021.



LAND OF SYMBIOSIS

THE GREAT "ISLAND"

Large expanses of vineyards, woods and fields, surrounded by two majestic rivers are the characteristics of this rich land. Like an island, discover our terroir where the elements come together as a symbiosis...

Historically a land of white wines, a rarer colour in Bordeaux, with recognition in 1937 by the AOP Entre-deux-Mers blanc, the know-how of red wines remained underestimated for almost a century. Forced to market our red wines under the sole generic AOP of Bordeaux (Bordeaux / Bordeaux Supérieur), the recognition of our terroir by affixing the name Entre-deux-Mers to our bottles of red wines is now in place as of January 2025, with the first vintage 2023 in bottle. Strict specifications make this appellation a reference in Bordeaux.

LA GRAVE BERTIN



LA GRANDE ÎLE

ENTRE DEUX MERS
APPELLATION D'ORIGINE CONTRÔLÉE

APPELLATION SPECIFICATIONS



declarative plot selection before harvest



minimum planting density
4500 vines/Ha



mandatory blend of at least two main grape varieties, at least 20% of each in the blend



long aging, marketed from January 1st of the 2nd year following of the harvest



prohibited: total chemical weeding, thermovinification, wood chips

KEY FIGURES OF THE WINERY WITHIN THE APPELLATION



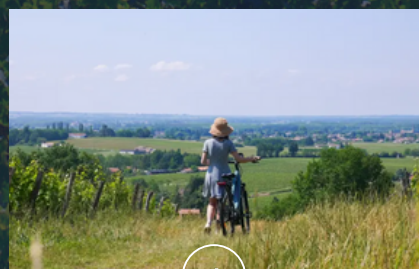
17 Hectares vineyard



800 hl in 2023, of which 130 in AOC Entre deux mers red



100 000 bottles produced in 2023, including 20 000 in AOC Entre deux Mers red



DISCOVER OUR WINES

SYMBIOSE AOC Entre Deux Mers rouge

Discovering the SYMBIOSE cuvée from Château La Grave Bertin will help understanding the symbiosis of the elements of the Entre-deux-Mers region. Between two rivers, between the heat of the sun and the rain brought down by the Atlantic coast, between two emblematic Bordeaux grape varieties, between a land and its vines.

SOIL

Clay-limestone gravel, plot selection according to appellation specifications

DENSITY

4500 vines/h, 55HI/H of production

BLEND

80% Merlot, 20% Cabernet Franc

HARVEST

Mechanical harvest with selective sorting before crushing

WINE MAKING

Long maceration (20 days) in thermo-regulated vats by grape variety, regular pumping over during and after alcoholic fermentation, complete malolactic fermentation in vats, final blending after vinification

AGING

12 months with new wood (medium toasting), with regular pumping over, fined and lightly filtered before bottling

AGING POTENTIAL

10-12 years

FORMAT

75cl (light glass 405 gr), magnum, double magnum



Very intense garnet colour with purple reflections



Expressive, lively and aniseed, crunchy black fruits, floral tones, melted woodiness



Beautiful balance, chiselled tannins with a saline and spicy finish, with aromas of black fruits and subtle vanilla



DISCOVER OUR WINES

GRANDE RÉSERVE AOC Bordeaux rouge

The winery's second wine, GRANDE RÉSERVE (from the 2024 vintage) is a softer and more subtle wine, but still with an entre-deux-mers spirit, elegant, silky and fresh.

SOIL

Sandy clay-limestone gravel

DENSITY

4200 vines/h, 50H/H of production

BLEND

90% Merlot, 5% Cabernet Franc, 5% Cabernet Sauvignon

HARVEST

Mechanical harvest with selective sorting before crushing

WINE MAKING

Long maceration (20 days) in thermo-regulated vats by grape variety, regular pumping over complete malolactic fermentation in vats

AGING

9 months in vat, with regular pumping over, fined and lightly filtered, a few months on wood for a refined and silky structure

AGING POTENTIAL

7-8 years



Intense ruby colour, purple hints



Expressive, aromas of berry fruits (blackcurrant, redcurrant)



Soft start, fine and harmonious tannins, beautiful elegant length



DISCOVER OUR WINES

"CLASSIQUE" BORDEAUX

Soft red, light red to drink chilled, pale rosé, dry and fruity white... The range of Bordeaux is vast. Therefore, we have brought together in this range, specially made for the horeca market, all colours of the BORDEAUX appellation.

Classic but modern in the style...



GENTLEMAN VIGNERON

French elegance and modern, producing easy-drinking wines without complicated blabla: that is what a true GENTLEMAN VIGNERON made in Bordeaux is !

This range represents our vision, as young winemakers, of what Bordeaux should be: good wines to share. You don't need to be a connoisseur to enjoy a good glass of Merlot, appreciate a Cabernet Rosé, or share a Sauvignon Blanc with oysters!

Bordeaux's instinct is to make enjoyable wines for all occasions!

THE AGENCY

VINS & VIGNOBLES FURT

Sharing is the primary passion of a winemaker. This is why we have developed our agency in order to offer our wines alongside the wines of our partners and fellow winegrowers from Bordeaux and South-West.



Production

Wine production in Entre-deux-Mers region since 1895



Agency

Distribution of wines from partners in Bordeaux and South-West



Storage

Storage, warehousing and order consolidation



Logistics

Complete logistics from order taking to shipping



Tailor made services

On-demand searches, private labels, batch offers...



CHÂTEAU
LA GRAVE BERTIN



CHÂTEAU LA GRAVE BERTIN
VINS ET VIGNOBLES FURT
6 ch. de la grave, 33450 CAMEYRAC - FRANCE
+33(0)5 56 72 45 61
info@furt.fr
www.furt.fr

